

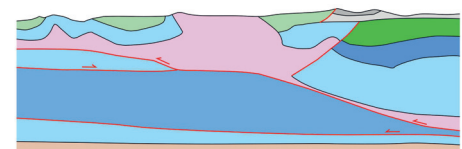
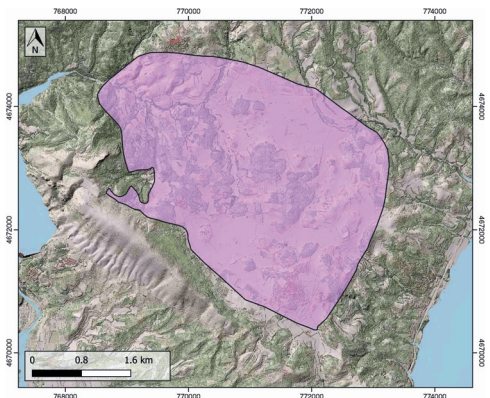
GENERAL INFORMATION

Structure type	Evaporite Diapir
Deformed/Undeformed	Deformed
Geological Setting	South Pyrenees Central Unit, Sierras Marginales, Boltaña-Balzes thrust sheet
Outcropping/buried	Outcropping
Evaporite unit/s name	El Pont de Suert Fm.
Evaporite unit/s age	Upper Anisian and Carnian-Rhaetian (Middle-Upper Triassic)
Evaporite unit/s origin	Marine
Classif. (Hudec and Jackson, 2009)	Passive piercement
Classif. (Jackson and Talbot, 1986)	Salt wall
Other comments	Also known as "La Puebla de Castro". Passive translation of the diapir during Oligocene-Miocene main compression stage.

LOCATION



SHAPE AND SUB-SURFACE STRUCTURE



STRATIGRAPHY AND STRUCTURE

Evaporite unit/s composition	Shale-Gypsum-Anhydrite-Halite
Post-evaporite and pre-kinematic unit/s	Lower Jurassic (dolostones, anhydrite) ; Albian (Turbón Fm., sandstones) ; Cenomanian-Turonian (Sopeira Fm., marlstones) ; Coniacian-Santonian (Montsec Fm., limestones) ; Palaeocene (Garumnian, Tremp Fm., mudstones, siltstones and sandstones)
Syn-kinematic unit/s	Upper Santonian-Maastrichtian (Valcarga, Terradets, Aren Fms.) ; Eocene (Alveoline Lms, Guara, San vicente, Camanue, Blue Marls, Sobrarbe, Belsué-Atarés Fms.)
Post-kinematic unit/s (or post-evaporite desposition when undeformed)	Oligocene (Graus Fm., conglomerates) ; Quaternary
Age of evaporite flow or deformation (when deformed)	Eocene and Upper Cretaceous
Flow or deforming triggering mechanisms	Tectonic inversion and thrusting (early stage) ; Compression and diapir shortening (late stage)
Halokinetic structures	Thrust faults / thickness variations / joints / progressive unconformities

SUB-SURFACE DATA AVAILABILITY

Available borehole data	Yes
Available seismic data	Yes

MAIN REFERENCES

Stratigraphy	Salvany and Bastida (2004)
Regional Stratigraphy	Santolaria et al. (2020)
Structure	Santolaria et al. (2017)
Regional Structure	Cámara and Flinch (2017)
Gravimetry	Santolaria et al. (2017)
Petrophysics/Paleomagnetics	Muñoz et al. (2013)

GEOLOGY (GEODE IGME)

