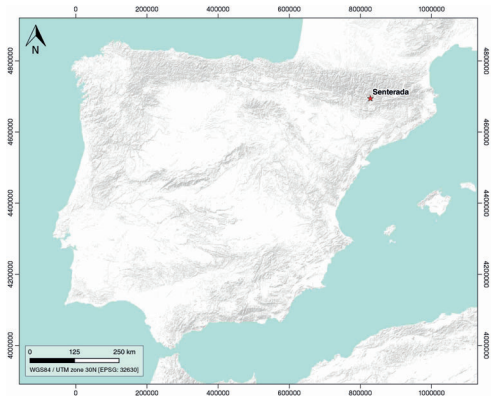


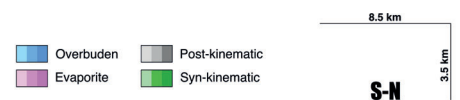
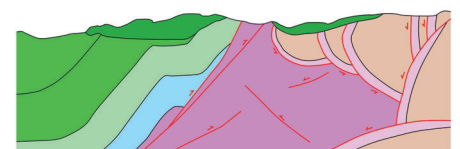
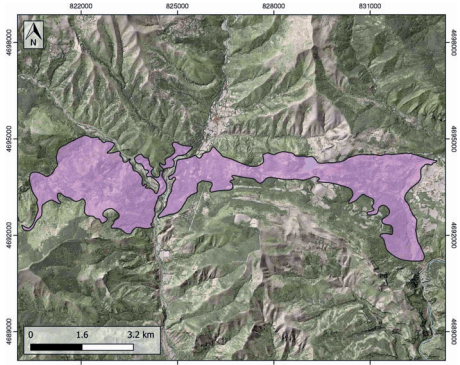
## GENERAL INFORMATION

Structure type	Evaporite Diapir
Deformed/Undeformed	Deformed
Geological Setting	South Pyrenees Central Unit, Nogueres zone
Outcropping/buried	Outcropping
Evaporite unit/s name	El Pont de Suert Fm.
Evaporite unit/s age	Upper Anisian and Carnian-Rhaetian (Middle-Upper Triassic)
Evaporite unit/s origin	Marine
Classif. (Hudec and Jackson, 2009)	Passive piercement
Classif. (Jackson and Talbot, 1986)	Salt roller, welded
Other comments	Post-late Santonian compressional overprinting: weld formation and partial downward salt flow into the source layer. Connected with de Adons diapir (ID #044) by a partially-welded, subvertical salt structure.

## LOCATION



## SHAPE AND SUB-SURFACE STRUCTURE



## STRATIGRAPHY AND STRUCTURE

Evaporite unit/s composition	Shale-Marlstone-Gypsum-Halite-Ophites
Post-evaporite and pre-kinematic unit/s	Lower Jurassic (limestones and dolostones)
Syn-kinematic unit/s	Lower Cretaceous / Albian-Cenomanian / Cenomanian / Cenomanian-Turonian / Turonian / Coniacian-Santonian
Post-kinematic unit/s (or post-evaporite deposition when undeformed)	Late Lutecian-Late Oligocene (conglomerates) and Quaternary (detrital deposits)
Age of evaporite flow or deformation (when deformed)	Albian to Santonian and Upper Jurassic to Lower Cretaceous
Flow or deforming triggering mechanisms	Main development of the Montiberri, Northern Faiada, Sant Gervàs and Sopeira depocenters
Halokinetic structures	Normal high-angle faults / thrusts / thickness variations / progressive unconformities

## SUB-SURFACE DATA AVAILABILITY

Available borehole data	Yes
Available seismic data	Yes

## MAIN REFERENCES

Stratigraphy	Beamud et al. (2011)
Regional Stratigraphy	Saura et al. (2016)
Structure	Dalton (2019)
Regional Structure	Canérot et al. (2005)
Gravimetry	Ayala et al. (2016)
Petrophysics/Paleomagnetism	Santolaria et al. (2017)

## GEOLOGY (GEODE IGME)

