

# Serres de Llevant

ID #133

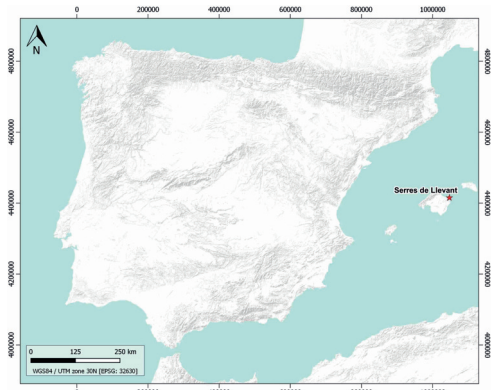
# SUMARIZED INDEX CARD

Downloaded from Iberian Evaporite Structure DataBase

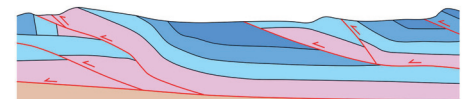
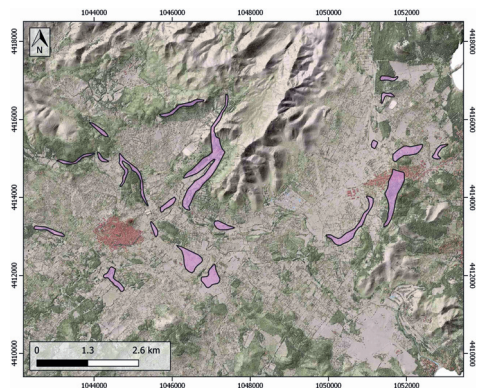
## GENERAL INFORMATION

|                                     |  |
|-------------------------------------|--|
| Structure type                      | Evaporite-detached thrust  |
| Deformed/Undeformed                 | Deformed   |
| Geological Setting                  | Betic system, Serres de Llevant range (Mallorca island)  |
| Outcropping/buried                  | Outcropping  |
| Evaporite unit/s name               | Keuper facies, Middle Muschelkalk facies   |
| Evaporite unit/s age                | Upper Anisian and Carnian-Rhaetian (Middle-Upper Triassic)   |
| Evaporite unit/s origin             | Marine   |
| Classif. (Hudec and Jackson, 2009)  | Thrust piercement  |
| Classif. (Jackson and Talbot, 1986) | nd   |
| Other comments                      | The Serres de Llevant and the Serra de Tramuntana at the north-western part of the island, are considered to be the north-eastern end of the Betic fold-and-thrust belt. |

## LOCATION



## SHAPE AND SUB-SURFACE STRUCTURE



## STRATIGRAPHY AND STRUCTURE

|   |   |
|---|---|
| Evaporite unit/s composition  | Claystonestone-Gypsum-Sandstone-Volcanics   |
| Post-evaporite and pre-kinematic unit/s                               | Upper Triassic (Rhaetian, dolostones, breccias and «carniolas»); Lower Jurassic (tabular limestones and dolostones); Middle Jurassic (marlstones, marly limestones and limestones); Upper Jurassic (oolitic limestones and tabular limestones); Lower Cretaceous (sandy limestones and marlstones, marly limestones); Eocene (conglomerates, sandstones and claystones) |
| Syn-kinematic unit/s  | Early Miocene (conglomerates, sandstones and claystones with a uppermost marlstone level)   |
| Post-kinematic unit/s (or post-evaporite desposition when undeformed) | Middle Miocene; Upper Miocene; Pliocene; Quaternary   |
| Age of evaporite flow or deformation (when deformed)                  | Oligocene to Miocene  |
| Flow or deforming triggering mechanisms                               | Alpine compression  |
| Halokinetic structures  | Thrust faults / anticline-syncline folding  |

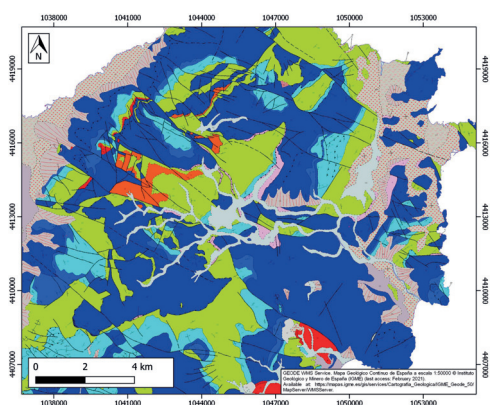
## SUB-SURFACE DATA AVAILABILITY

|                         |    |
|-------------------------|----|
| Available borehole data | No |
| Available seismic data  | No |

## MAIN REFERENCES

|                             |                         |
|-----------------------------|-------------------------|
| Stratigraphy                | Rosales et al. (2021)   |
| Regional Stratigraphy       | Gelabert (1998)         |
| Structure                   | Sàbat et al. (1988)     |
| Regional Structure          | Booth-Rea et al. (2017) |
| Gravimetry                  | Sàbat et al. (2011)     |
| Petrophysics/Paleomagnetics | nd                      |

## GEOLOGY (GEODE IGME)



IBERIAN  
EVAPORITE  
STRUCTURE  
DATABASE