

Sierra de Cantabria

ID #081

SUMARIZED INDEX CARD

Downloaded from Iberian Evaporite Structure DataBase

GENERAL INFORMATION

Structure type	Evaporite-detached thrust
Deformed/Undeformed	Deformed
Geological Setting	Basque-Cantabrian Basin, Navarra-Álava trough
Outcropping/buried	Buried
Evaporite unit/s name	Keuper Facies
Evaporite unit/s age	Carnian-Rhaetian (Upper Triassic)
Evaporite unit/s origin	Marine
Classif. (Hudec and Jackson, 2009)	Thrust piercement
Classif. (Jackson and Talbot, 1986)	Salt wall
Other comments	Shifted the Treviño and Urbasa-Andia synclines southwards over the Ebro Valley footwall block with an estimated shortening based in geological reconstructions between 15 and 20 km (see Cámara, 2020).

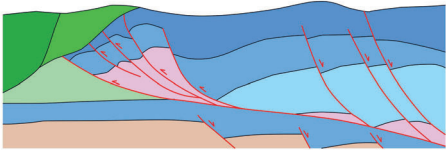
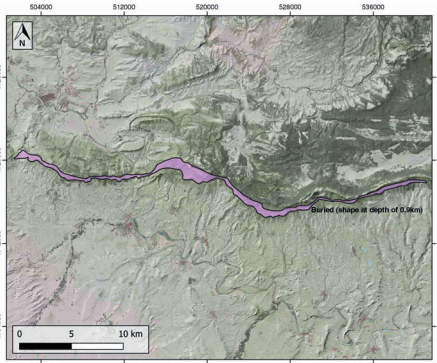
LOCATION



SHAPE AND SUB-SURFACE STRUCTURE

STRATIGRAPHY AND STRUCTURE

Evaporite unit/s composition	Gypsum-Shale-Mudstone-Marlstone
Post-evaporite and pre-kinematic unit/s	Jurassic (dolostones and limestones) ; Upper Weald facies (sandstones) / Aptian-middle Albian (Urgonian: marlstones, limestones, packstones, breccias, rudist limestones; Punta del Bakio Unit: turbidites, mudstones) / Danian-Selandian (dolomites, limestones) / Thanetian-Ypresian (limestones and marls) / Lutetian-Bartonian / Early Priabonian
Syn-kinematic unit/s	Oligocene-Lower Miocene (shales, marlstones, sandstones and conglomerates) ; Upper Miocene (sandstones and conglomerates)
Post-kinematic unit/s (or post-evaporite desposition when undeformed)	Quaternary (alluvial and colluvial detrital deposits)
Age of evaporite flow or deformation (when deformed)	Oligocene to Miocene
Flow or deforming triggering mechanisms	Main compressive Alpine stage
Halokinetic structures	Low-angle unconformities / joints



SUB-SURFACE DATA AVAILABILITY

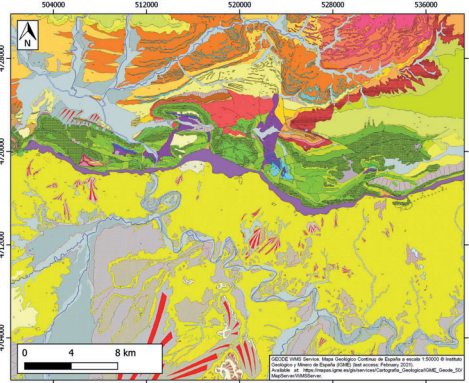
Available borehole data	Yes
Available seismic data	Yes



MAIN REFERENCES

Stratigraphy	Arostegui et al. (2006)
Regional Stratigraphy	Pedraza et al. (2017)
Structure	Ábalos and Llanos (1994)
Regional Structure	Cámara (2017)
Gravimetry	Pinto et al. (2000)
Petrophysics/Paleomagnetism	Llambas et al. (2017)

GEOLOGY (GEODE IGME)



IBERIAN
EVAPORITE
STRUCTURE
DATABASE