

# Talavera-Briançó

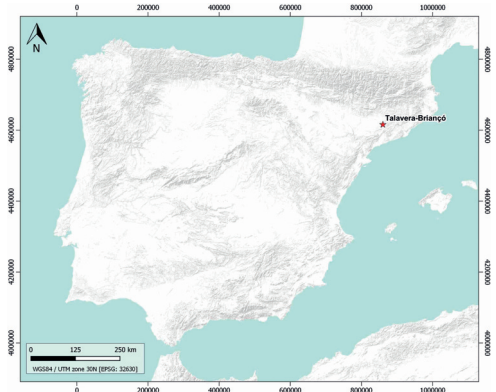
ID #120

SUMARIZED INDEX CARD  
Downloaded from Iberian Evaporite Structure DataBase

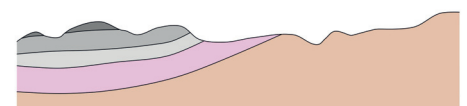
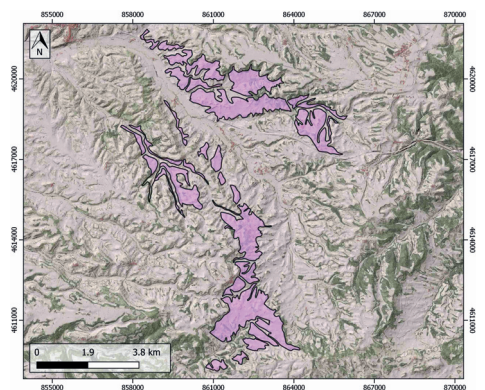
## GENERAL INFORMATION

Structure type	Evaporite body
Deformed/Undeformed	Undeformed
Geological Setting	Ebro foreland basin, Southeastern Domain
Outcropping/buried	Outcropping
Evaporite unit/s name	Talavera Fm.
Evaporite unit/s age	Stampian (Paleogene)
Evaporite unit/s origin	Continental
Classif. (Hudec and Jackson, 2009)	No diapirism
Classif. (Jackson and Talbot, 1986)	No diapirism
Other comments	-

## LOCATION



## SHAPE AND SUB-SURFACE STRUCTURE



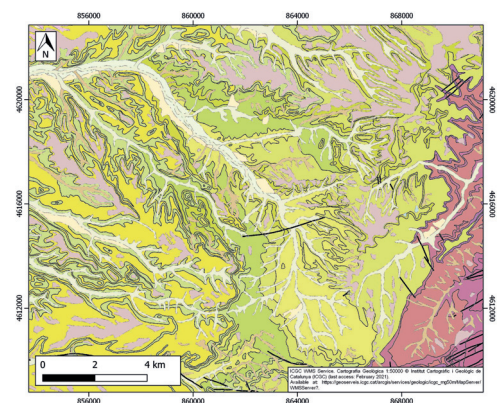
## STRATIGRAPHY AND STRUCTURE

Evaporite unit/s composition	Massive gypsum-Nodular gypsum
Post-evaporite and pre-kinematic unit/s	-
Syn-kinematic unit/s	-
Post-kinematic unit/s (or post-evaporite deposition when undeformed)	Upper Oligocene (sandstones, shales, marlstones and limestones) ; Quaternary
Age of evaporite flow or deformation (when deformed)	Undeformed
Flow or deforming triggering mechanisms	-
Halokinetic structures	-

## SUB-SURFACE DATA AVAILABILITY

Available borehole data	Yes
Available seismic data	Yes

## GEOLOGY (GEODE IGME)



## MAIN REFERENCES

Stratigraphy	Colldeforns et al. (1994)
Regional Stratigraphy	Ortí et al. (2007)
Structure	Gaspar-Escribano et al. (2004)
Regional Structure	Anadón et al. (1985)
Gravimetry	Guinea et al. (2010)
Petrophysics/Paleomagnetism	Costa (2011)



IBERIAN  
EVAPORITE  
STRUCTURE  
DATABASE