

# Tinajas-Torralba

ID #150

## SUMARIZED INDEX CARD

Downloaded from Iberian Evaporite Structure DataBase

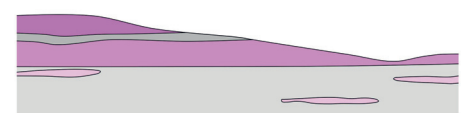
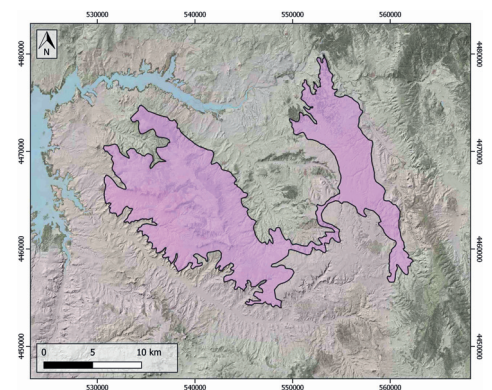
### GENERAL INFORMATION

Structure type	Evaporite body
Deformed/Undeformed	Slightly deformed
Geological Setting	Tagus Basin, Loranca Sub-Basin
Outcropping/buried	Outcropping
Evaporite unit/s name	Unnamed
Evaporite unit/s age	Aquitanian-Burdigalian (Lower Miocene)
Evaporite unit/s origin	Continental
Classif. (Hudec and Jackson, 2009)	No diapirism
Classif. (Jackson and Talbot, 1986)	No diapirism
Other comments	Stratigraphic successions of Early Miocene age (Tórtola, Villalba de la Sierra and Valdeganga depositional systems) include interbedded deposits of playa-lake and meandering river environments.

### LOCATION



### SHAPE AND SUB-SURFACE STRUCTURE



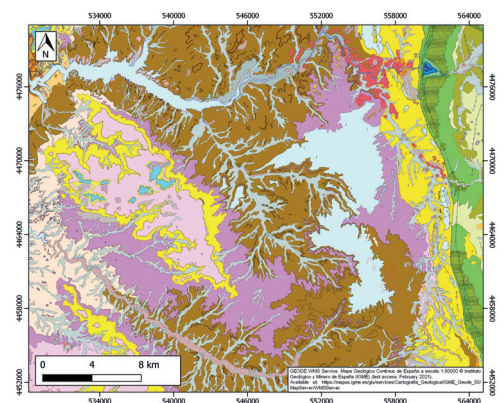
### STRATIGRAPHY AND STRUCTURE

Evaporite unit/s composition	Gypsum
Syn-kinematic unit/s	Evaporitic rocks
Post-evaporite and pre-kinematic unit/s	-
Post-kinematic unit/s (or post-evaporite deposition when undeformed)	Middle Miocene; Upper Miocene ; Pliocene ; Quaternary
Age of evaporite flow or deformation (when deformed)	Miocene
Flow or deforming triggering mechanisms	Alpine compression, Altomira range development
Halokinetic structures	Syncline-Anticline folding / thrust faults

### SUB-SURFACE DATA AVAILABILITY

Available borehole data	Yes
Available seismic data	Yes

### GEOLOGY (GEODE IGME)



### MAIN REFERENCES

Stratigraphy	Díaz-Molina et al. (1993)
Regional Stratigraphy	Civis et al. (2004)
Structure	Valcárcel et al. (2016)
Regional Structure	Diaz et al. (2020)
Gravimetry	Ayala et al. (2016)
Petrophysics/Paleomagnetism	Valcárcel et al. (2016)



IBERIAN  
EVAPORITE  
STRUCTURE  
DATABASE