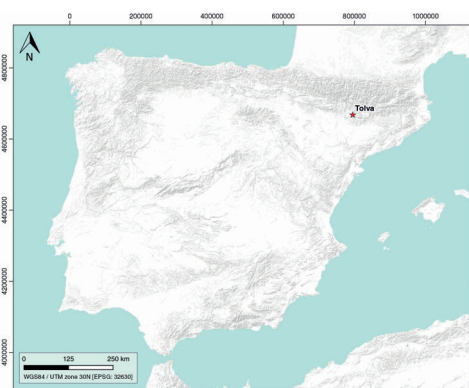


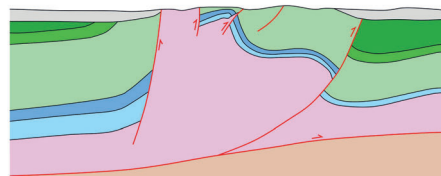
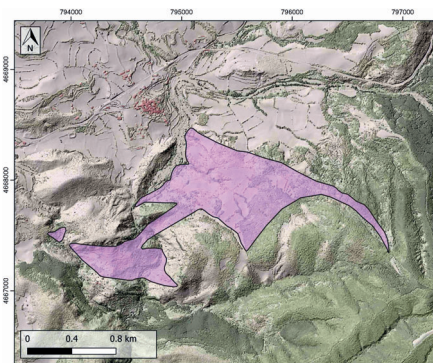
### GENERAL INFORMATION

Structure type	Evaporite-cored anticline
Deformed/Undeformed	Deformed
Geological Setting	South Pyrenees Central Unit, Sierras Marginales, Boltaña-Balzes thrust sheet
Outcropping/buried	Outcropping
Evaporite unit/s name	El Pont de Suert Fm.
Evaporite unit/s age	Upper Anisian and Carnian-Rhaetian (Middle-Upper Triassic)
Evaporite unit/s origin	Marine
Classif. (Hudec and Jackson, 2009)	Passive piercement
Classif. (Jackson and Talbot, 1986)	Salt anticline
Other comments	Genetically linked to the Tolva anticline, developed during the alpine compression in the Graus-Tremp basin (see Franco-Balaguer and Casas-Sainz, 2016).

### LOCATION



### SHAPE AND SUB-SURFACE STRUCTURE



### STRATIGRAPHY AND STRUCTURE

Evaporite unit/s composition	Shale-Gypsum-Anhydrite-Ophites
Syn-kinematic unit/s	Upper Cretaceous (Calizas de La Pardina, Calizas de La Cova y Font de les Bagasses Fms., limestones, marlstones); Late Upper Cretaceous (Calizas de Terradets Fm., limestones); Palaeocene (Trempe and Arén Fms., sandstones); Lower Eocene (limestones with alveolines, marly limestones); Early Oligocene (Graus Fm., conglomerates and sandstones)
Post-evaporite and pre-kinematic unit/s	Early Jurassic (Cortes de Tajuña and Cuevas Labradas Fms.); Lower Jurassic (limestones); Upper Jurassic (limestones); Lower Cretaceous (marlstones, limestones) Early Upper Cretaceous (Santa Fe Fm.)
Post-kinematic unit/s (or post-evaporite deposition when undeformed)	Quaternary (alluvial and colluvial detrital deposits)
Age of evaporite flow or deformation (when deformed)	Upper Cretaceous to Oligocene
Flow or deforming triggering mechanisms	E-W regional normal faulting
Halokinetic structures	Normal faults / progressive unconformities / anticline-syncline folding

### SUB-SURFACE DATA AVAILABILITY

Available borehole data	Yes
Available seismic data	Yes



### MAIN REFERENCES

Stratigraphy	Franco-Balaguer and Casas-Sainz (2016)
Regional Stratigraphy	Santolaria et al. (2020)
Structure	Franco-Balaguer and Casas-Sainz (2016)
Regional Structure	Muñoz et al. (2018)
Gravimetry	Casas et al. (2016)
Petrophysics/Paleomagnetism	Santolaria et al. (2017)

### GEOLOGY (GEODE IGME)

