

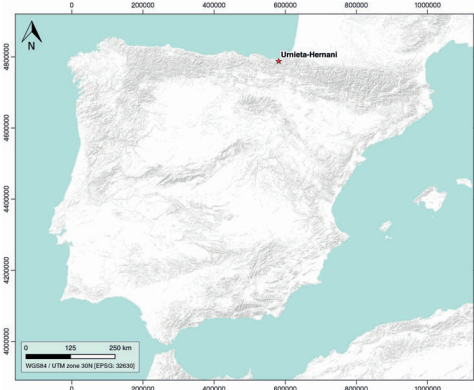
Urnieta-Hernani

ID #090

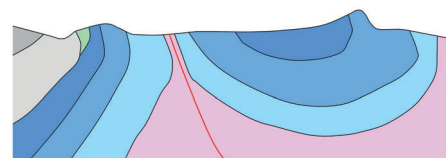
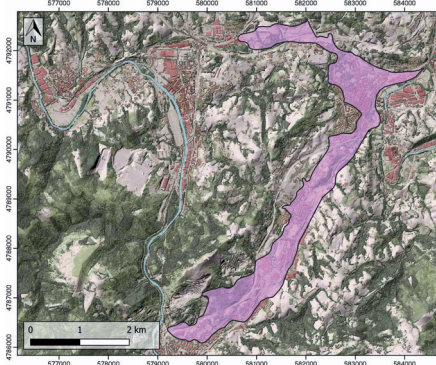
GENERAL INFORMATION

Structure type	Evaporite-cored anticline
Deformed/Undeformed	Deformed
Geological Setting	Basque-Cantabrian Basin, Basque Arc
Outcropping/buried	Outcropping
Evaporite unit/s name	Keuper facies
Evaporite unit/s age	Carnian-Rhaetian (Upper Triassic)
Evaporite unit/s origin	Marine
Classif. (Hudec and Jackson, 2009)	Ductile piercement
Classif. (Jackson and Talbot, 1986)	Salt wall
Other comments	Txoritokieta-Astigarraga (ID #089), Urnieta-Hernani and Oiartzun (ID #091) diapirs are nowadays located along the trace of ancient basement faults, probably denoting the preferential migration of the decollement halokinetic layer towards them (see Bodego et al., 2014)

LOCATION



SHAPE AND SUB-SURFACE STRUCTURE



STRATIGRAPHY AND STRUCTURE

Evaporite unit/s composition	Red Claystones-Gypsum-Halite
Post-evaporite and pre-kinematic unit/s	Jurassic (micritic limestones, marlstones and marly limestones) ; Neocomian («serpulid» limestones) ; Lower Aptian (Errenaga Fm., mudstones, limestones, sandstones and wackestones) ; Upper Aptian-Lower Albian (Burunzta limestone Fm.); Early Upper Albian (Azkorte and Abalotz Fms.) Early Upper Albian (Oriamendi Fm., mudstones and sandstones)
Syn-kinematic unit/s	Upper Albian-Lower Cenomanian (Kostartzu and Lasarte Fms., breccia and megabreccias, sandstones, limestones and mudstones)
Post-kinematic unit/s (or post-evaporite desposition when undeformed)	Middle-Cenomanian (hemipelagic limestones and marls, sandstones) ; Quaternary
Age of evaporite flow or deformation (when deformed)	Middle Cretaceous
Flow or deforming triggering mechanisms	Cretaceous rifting of the Basque-Cantabrian basin
Halokinetic structures	Normal faults / progressive unconformities / anticline-syncline folding

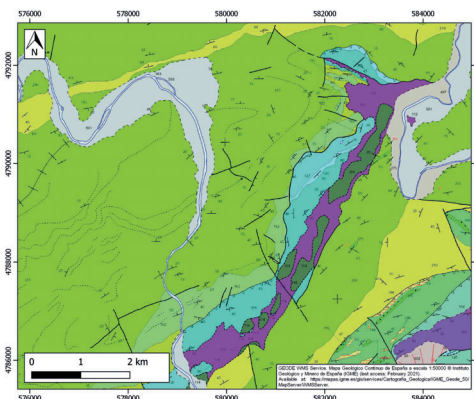
SUB-SURFACE DATA AVAILABILITY

Available borehole data	No
Available seismic data	Yes

MAIN REFERENCES

Stratigraphy	Bodego et al. (2018)
Regional Stratigraphy	Pedraza et al. (2017)
Structure	Bodego et al. (2018)
Regional Structure	Cámara (2017)
Gravimetry	Ayala et al. (2016)
Petrophysics/Paleomagnetism	Llamas et al. (2017)

GEOLOGY (GEODE IGME)



IBERIAN
EVAPORITE
STRUCTURE
DATABASE