

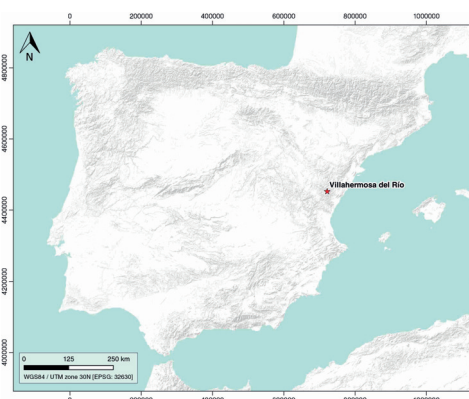
Villahermosa del Río

ID #078

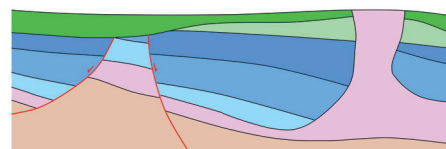
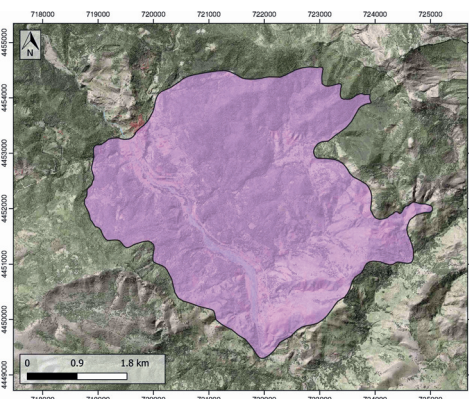
GENERAL INFORMATION

Structure type	Evaporite Diapir
Deformed/Undeformed	Deformed
Geological Setting	Iberian Range, Maestrat Basin
Outcropping/buried	Outcropping
Evaporite unit/s name	Keuper Facies
Evaporite unit/s age	Carnian-Rhaetian (Upper Triassic)
Evaporite unit/s origin	Marine
Classif. (Hudec and Jackson, 2009)	Passive piercement
Classif. (Jackson and Talbot, 1986)	Salt pillow
Other comments	-

LOCATION



SHAPE AND SUB-SURFACE STRUCTURE



STRATIGRAPHY AND STRUCTURE

Evaporite unit/s composition	Gypsum-Shale-Marlstone
Post-evaporite and pre-kinematic unit/s	Middle Jurassic (limestones, dolostones) ; Upper Jurassic (marlstones, limestones, dolostones) ; Valanginian-Barremian (Weald Facies, shales, claystones, sandstones, marly limestones, limestones)
Syn-kinematic unit/s	Barremian (sandstones, limestones) ; Lower Aptian (limestones, dolostones) ; Upper Aptian (marlstones, limestones) ; Lower Albian (claystones, sandstones) ; Upper Albian (limestones, marlstones, limestones)
Post-kinematic unit/s (or post-evaporite deposition when undeformed)	Quaternary (alluvial and colluvial detrital deposits)
Age of evaporite flow or deformation (when deformed)	Lower Cretaceous
Flow or deforming triggering mechanisms	Late Jurassic-Early Cretaceous rift
Halokinetic structures	Listric faulting / thickness variations / joints / progressive unconformities

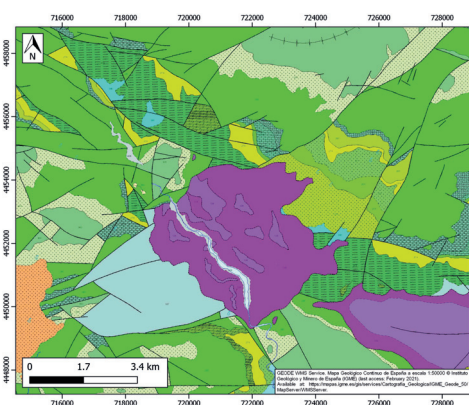
SUB-SURFACE DATA AVAILABILITY

Available borehole data	Yes
Available seismic data	No

MAIN REFERENCES

Stratigraphy	Canérot (1991)
Regional Stratigraphy	Nebot and Guimera (2016)
Structure	Canérot (1991)
Regional Structure	Roca et al. (1994)
Gravimetry	Ayala et al. (2016)
Petrophysics/Paleomagnetism	nd

GEOLOGY (GEODE IGME)



IBERIAN
EVAPORITE
STRUCTURE
DATABASE