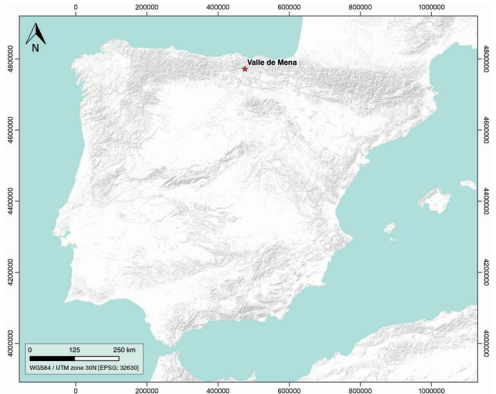


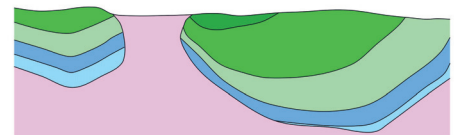
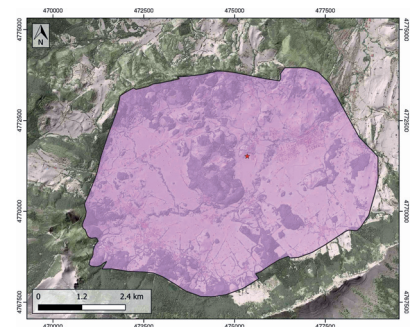
GENERAL INFORMATION

Structure type	Evaporite Diapir
Deformed/Undeformed	Deformed
Geological Setting	Basque-Cantabrian Basin, Navarra-Álava trough
Outcropping/buried	Outcropping
Evaporite unit/s name	Keuper facies
Evaporite unit/s age	Carnian-Rhaetian (Upper Triassic)
Evaporite unit/s origin	Marine
Classif. (Hudec and Jackson, 2009)	Passive piercement
Classif. (Jackson and Talbot, 1986)	Salt stock
Other comments	Northwest-southeast alignment of the Murguía, Orduña, and Villasana de Mena diapirs. Pb-Zn mineralization hints at the eastern sector of the diapir. Limestones and dolomites interbedded with the salt.

LOCATION



SHAPE AND SUB-SURFACE STRUCTURE



STRATIGRAPHY AND STRUCTURE

Evaporite unit/s composition	Gypsum-Halite-Anhydrite-Claystone-Ophites
Post-evaporite and pre-kinematic unit/s	Lower Jurassic (dolomitic breccias, limestones and marls)
Syn-kinematic unit/s	Albo-Cenomanian (Valmaseda Fm.) / Cenomanian (marls, limestones) / Turonian (Gárate Fm.) / Middle-Upper Turonian (Zuazo Fm.) / Lower Coniacian (Subijana Fm.) / Palaeocene-Eocene
Post-kinematic unit/s (or post-evaporite deposition when undeformed)	Miocene (sandstones and conglomerates) / Quaternary (alluvial and colluvial deposits)
Age of evaporite flow or deformation (when deformed)	Eocene (main stage), Middle Cretaceous (early pillow-stage piercement)
Flow or deforming triggering mechanisms	Mesozoic extensional regime (early stage) and Alpine compression (main stage)
Halokinetic structures	Radial joints and faults / Syncline-Anticline folding

SUB-SURFACE DATA AVAILABILITY

Available borehole data	No
Available seismic data	Yes

MAIN REFERENCES

Stratigraphy	Perona (2016)
Regional Stratigraphy	Pedraza et al. (2017)
Structure	Fernández-Mendiola and García-Mondéjar (1997)
Regional Structure	Cámara (2017)
Gravimetry	Nettleton (1968)
Petrophysics/Paleomagnetism	Llamas et al. (2017)

GEOLOGY (GEODE IGME)

