

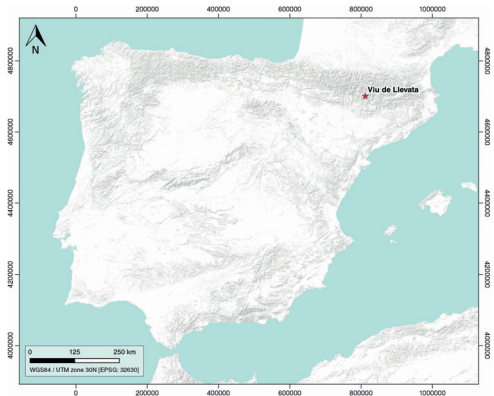
# Viu de Llevata

ID #045

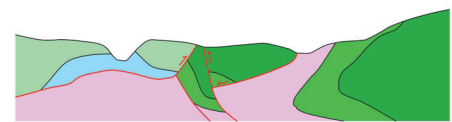
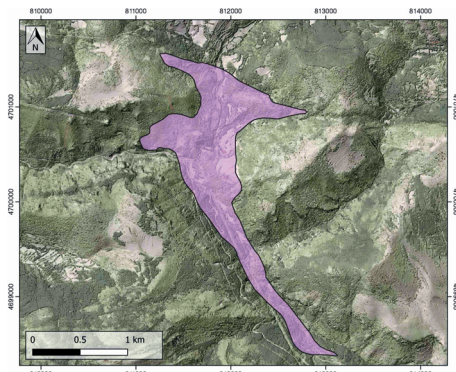
## GENERAL INFORMATION

Structure type	Evaporite Diapir
Deformed/Undeformed	Deformed
Geological Setting	South Pyrenees Central Unit, Nogueres zone
Outcropping/buried	Outcropping
Evaporite unit/s name	El Pont de Suert Fm.
Evaporite unit/s age	Upper Anisian and Carnian-Rhaetian (Middle-Upper Triassic)
Evaporite unit/s origin	Marine
Classif. (Hudec and Jackson, 2009)	Passive piercement
Classif. (Jackson and Talbot, 1986)	Salt roller, welded
Other comments	Post-late Santonian compressional overprinting: weld formation and partial downward salt flow into the source layer. Adons and Viu de Llevata diapirs are separated by a sub-vertical weld.

## LOCATION



## SHAPE AND SUB-SURFACE STRUCTURE



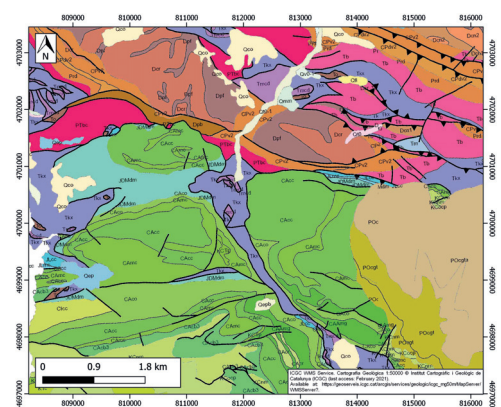
## STRATIGRAPHY AND STRUCTURE

Evaporite unit/s composition	Shale-Marlstone-Gypsum-Halite-Ophites
Post-evaporite and pre-kinematic unit/s	Lower Jurassic (limestones and dolostones)
Syn-kinematic unit/s	Lower Cretaceous / Albian-Cenomanian / Cenomanian / Cenomanian-Turonian / Turonian / Coniacian-Santonian
Post-kinematic unit/s (or post-evaporite deposition when undeformed)	Quaternary (alluvial and colluvial detrital deposits)
Age of evaporite flow or deformation (when deformed)	Albian to Santonian and Upper Jurassic to Lower Cretaceous
Flow or deforming triggering mechanisms	Gravity-driven and main development of the Sant Gervàs and Sopena depocenters
Halokinetic structures	Normal high-angle faults / thrust faults / joints / thickness variations

## SUB-SURFACE DATA AVAILABILITY

Available borehole data	No
Available seismic data	No

## GEOLOGY (GEODE IGME)



## MAIN REFERENCES

Stratigraphy	Saura et al. (2016)
Regional Stratigraphy	Dalton (2019)
Structure	Dalton (2019)
Regional Structure	Teixell and Muñoz (2000)
Gravimetry	Ayala et al. (2016)
Petrophysics/Paleomagnetism	Santolaria et al. (2017)



IBERIAN  
EVAPORITE  
STRUCTURE  
DATABASE