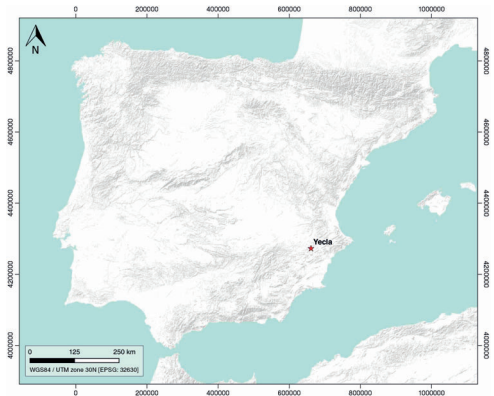


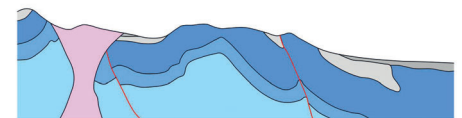
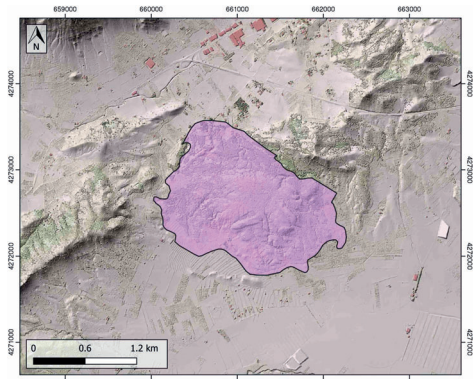
GENERAL INFORMATION

Structure type	Evaporite Diapir
Deformed/Undeformed	Deformed
Geological Setting	Betic system, Pre-Betic cordillera
Outcropping/buried	Outcropping
Evaporite unit/s name	Keuper facies
Evaporite unit/s age	Carnian-Rhaetian (Upper Triassic)
Evaporite unit/s origin	Marine
Classif. (Hudec and Jackson, 2009)	Ductile piercement
Classif. (Jackson and Talbot, 1986)	Salt stock
Other comments	-

LOCATION



SHAPE AND SUB-SURFACE STRUCTURE



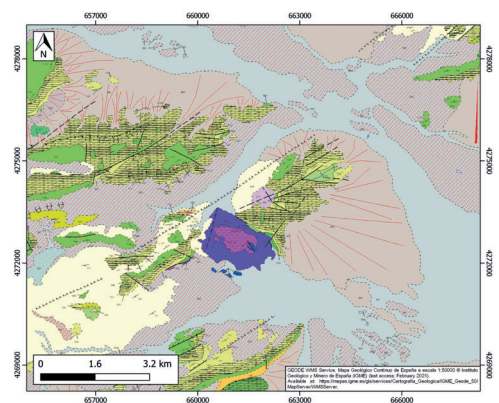
STRATIGRAPHY AND STRUCTURE

Evaporite unit/s composition	Claystone-Siltstone-Gypsum-Anhydrite-Halite
Post-evaporite and pre-kinematic unit/s	Jurassic-Cretaceous carbonate cover
Syn-kinematic unit/s	nd
Post-kinematic unit/s (or post-evaporite deposition when undeformed)	Paleogene to Quaternary detrital deposits
Age of evaporite flow or deformation (when deformed)	late Cretaceous to Miocene
Flow or deforming triggering mechanisms	Jumilla fault
Halokinetic structures	Anticline folding / radial joints

SUB-SURFACE DATA AVAILABILITY

Available borehole data	Yes
Available seismic data	No

GEOLOGY (GEODE IGME)



MAIN REFERENCES

Stratigraphy	Mancheño and Rodríguez-Estrella (1985)
Regional Stratigraphy	Escosa et al. (2018)
Structure	Mancheño and Rodríguez-Estrella (1985)
Regional Structure	Navarro-Hervás and Rodríguez-Estrella (1985)
Gravimetry	Gorosábel and Castaño-Fernández (1995)
Petrophysics/Paleomagnetism	nd

