

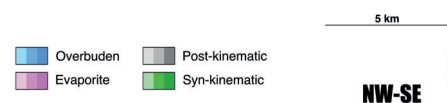
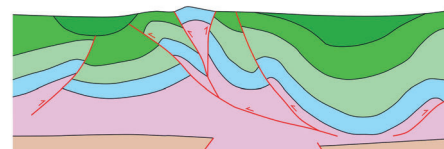
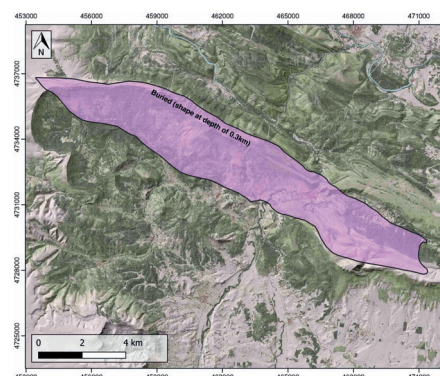
GENERAL INFORMATION

Structure type	Evaporite-cored anticline
Deformed/Undeformed	Deformed
Geological Setting	Basque-Cantabrian Basin, Burgalesa Platform
Outcropping/buried	Buried
Evaporite unit/s name	Keuper facies
Evaporite unit/s age	Carnian-Rhaetian (Upper Triassic)
Evaporite unit/s origin	Marine
Classif. (Hudec and Jackson, 2009)	Ductile piercement, Thrust piercement
Classif. (Jackson and Talbot, 1986)	Salt anticline
Other comments	Interpreted as an halokinetic structure subsequently inverted during the main Alpine compressional stage (see Cámara, 2017). Surface-exposed analogue of the Ayoluengo oil field.

LOCATION



SHAPE AND SUB-SURFACE STRUCTURE



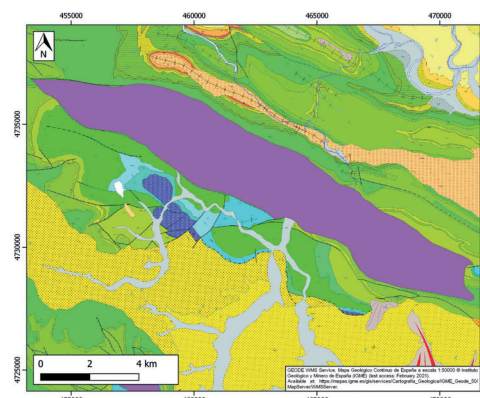
STRATIGRAPHY AND STRUCTURE

Evaporite unit/s composition	Marlstone-Gypsum-Claystone-Halite
Syn-kinematic unit/s	Upper Jurassic-Lower Cretaceous (Purbeck facies) ; Lower Cretaceous (Weald facies) ; Aptian-Albian (Escucha Fm., shales, sandstones and marls) Upper Oligocene-Miocene (Pancorbo Fm., red claystones, conglomerates and lacustrine limestones) ; Mid Miocene (Altabble and Buerba Fms., grey marlstones, red claystones, sandstones and conglomerates)
Post-evaporite and pre-kinematic unit/s	Jurassic (dolostones, limestones) ; Upper Cretaceous (sandstones, marlstones, limestones) ; Palaeocene-Eocene (dolostones, sandstones, limestones, marlstones) ; Lower Oligocene (red claystones)
Post-kinematic unit/s (or post-evaporite desposition when undeformed)	Miocene (Alfaro and Tudela Fms., sandstones and conglomerates) ; Quaternary
Age of evaporite flow or deformation (when deformed)	Oligocene to Miocene, Upper Jurassic to Lower Cretaceous
Flow or deforming triggering mechanisms	Extensional tectonics (early stage) ; Alpine compression and tectonic inversion
Halokinetic structures	Thrust faults / anticline-syncline folding / Low-angle unconformities

SUB-SURFACE DATA AVAILABILITY

Available borehole data	Yes (private access)
Available seismic data	Yes

GEOLOGY (GEODE IGME)



MAIN REFERENCES

Stratigraphy	Tavani and Granado (2015)
Regional Stratigraphy	Pedraza et al. (2017)
Structure	Carola et al. (2015)
Regional Structure	Cámara (2017)
Gravimetry	Pinto et al. (2005)
Petrophysics/Paleomagnetism	Llamas et al. (2017)



IBERIAN
EVAPORITE
STRUCTURE
DATABASE