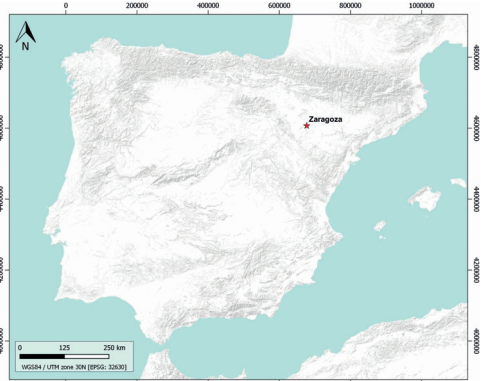


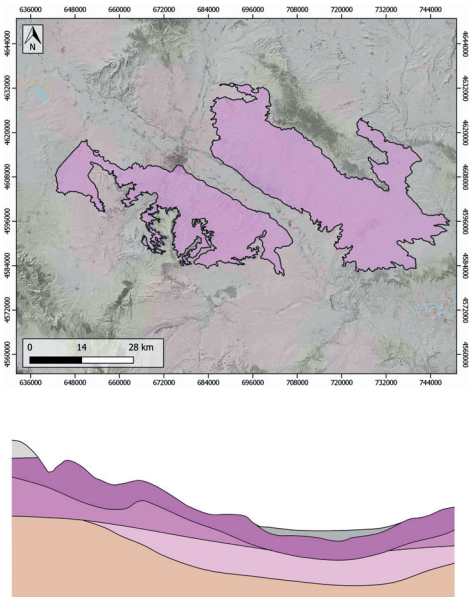
GENERAL INFORMATION

Structure type	Evaporite body
Deformed/Undeformed	Undeformed
Geological Setting	Ebro foreland basin, Northern-Central Domain
Outcropping/buried	Outcropping
Evaporite unit/s name	Zaragoza Fm.
Evaporite unit/s age	Lower-Middle Miocene
Evaporite unit/s origin	Continental
Classif. (Hudec and Jackson, 2009)	No diapirism
Classif. (Jackson and Talbot, 1986)	No diapirism
Other comments	Laminated-to-nodular facies of secondary gypsum (derived from anhydrite hydration) interbedded with lutites. Towards the south, the evaporitic facies are interbedded with the distal alluvial fan deposits from the northern flank of the Iberian Chain (see Salvany et al., 2007).

LOCATION



SHAPE AND SUB-SURFACE STRUCTURE

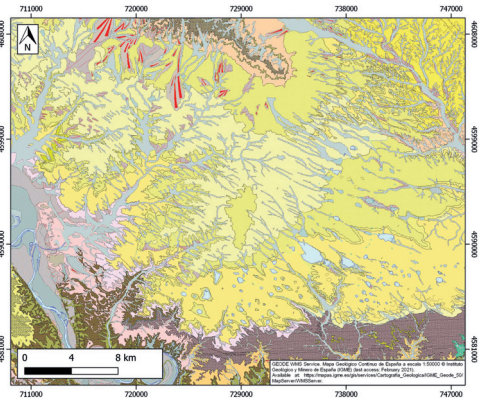


SUB-SURFACE DATA AVAILABILITY

Available borehole data	Yes
Available seismic data	Yes



GEOLOGY (GEODE IGME)



MAIN REFERENCES

Stratigraphy	Salvany et al. (2007)
Regional Stratigraphy	Salvany (1989)
Structure	Salvany et al. (2007)
Regional Structure	Cameselle (2010)
Gravimetry	Mochales et al. (2008)
Petrophysics/Paleomagnetism	nd



IBERIAN  
EVAPORITE  
STRUCTURE  
DATABASE